



# SURVEILLANCE MADE SMART

Embracing intelligent functions is one of  
the main trends in video surveillance

\* Design and specifications are subject to change without notice.






# Ultra-Smart Solution





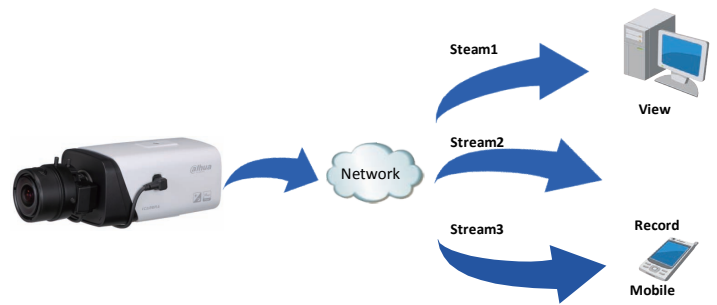
An aerial photograph of a city during sunset. The sky is filled with soft, golden clouds, and the sun is low on the horizon, casting a warm glow over the buildings. In the foreground, there are several multi-story residential buildings with balconies. In the background, more city buildings and a large construction site with several cranes are visible. A semi-transparent white rectangular box is overlaid on the upper part of the image, containing text.

Dahua Ultra-Smart Solution not only provides ultra high-definition image quality, but also brings more professional, convenient and intelligent video surveillance experience, driving a comprehensive upgrade with smart and simple functions that can better secure and protect your properties with peace in mind.

# ▶ Features

## ▶ Triple Streams

Triple-streams enable customized configuration on codec, frame rate and bitrate depending on various purposes. Two streaming can process 1080p resolution while the third streaming is capable of flexible usage, such as live view on mobile devices.



EIS off

EIS on

## ▶ EIS(Electrical Image Stabilizer)

EIS ensures to provide clear image without blur caused by shaky camera .

## ▶ Ultra WDR

Dahua Ultra WDR realizes up to 120dB wide dynamic range, which greatly improves image clarity even under extremely bright and dark areas or backlight situations.



WDR off

WDR on



Corridor Mode

## ▶ Corridor Mode

Corridor mode also known as rotate mode, adjusts horizontal scene to vertical, saving cost to a great extent as in conventional hallway scenario, which is long and narrow, it usually takes a few cameras to cover monitoring area and thus causes a waste of money and labor work.

## ▶ 3D DNR

Images are further enhanced with Ultra 3DNR to help eliminate more image noise and improve image clarity in low-light circumstances without creating ghosting and blurring.



NDR off

NDR on



## Defog

Defogging technology renders better image quality and clarity even in very foggy environment through the image correction algorithm.



Defog off



Defog on



Smart IR off

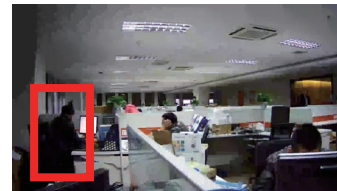
Smart IR on

## Smart IR

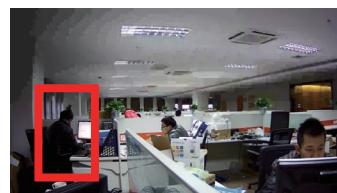
The enhanced Smart IR function realized intellectual IR lighting adjustment to meet different surroundings.

## ROI (Region of Interest)

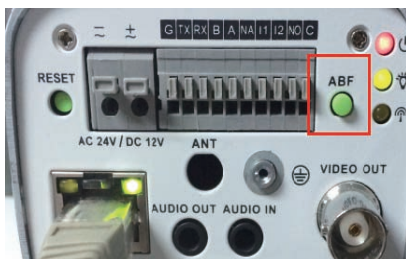
ROI allows the cameras to decrease non-ROI's image quality and make the important section clear in low bitrate that can save maximum storage usage and networking bandwidth.



ROI off



ROI on



## ABF (Auto Back Focus)

ABF technology makes it possible to automatically adjust the image sensor's positioning in order to acquire the best focus.

## Defocus Detection

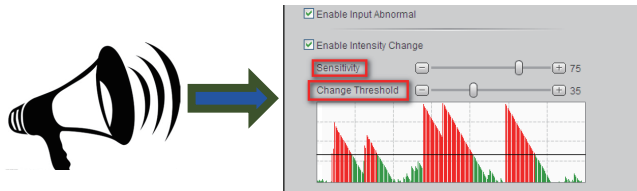
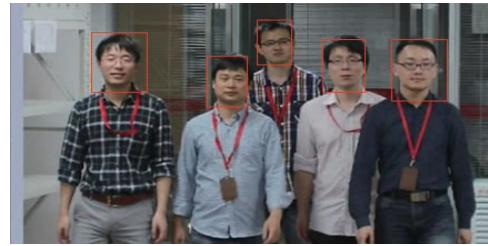
Ultra-Smart IP cameras can detect the issues regarding defocus automatically.



# Features

## Facial Detection

Facial detection can be accurately used to detect people's faces, seize facial images and trigger alarms.

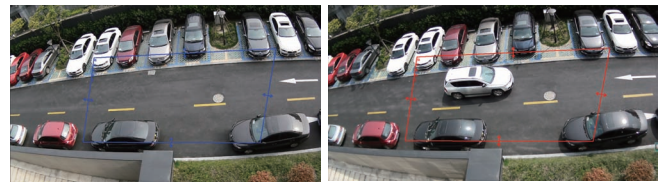


## Audio Detection

Audio detection is able to detect and identify sound objects in complex audio environments and obtain and analyze audio data which those sounds occurred.

## Intrusion Detection

Ultra-Smart IP cameras focus on detecting the moving objects in the protection area, identifying possible incidents, logging information about them, and reporting attempts. The proportion of the intruders can be automatically analyzed by the latest algorithm which greatly reduces the frequency of false alarm.



Normal status

Alarm status



Normal status

Alarm status

## Tripwire Detection

Ultra-Smart IP cameras can detect the intruders for an alarm triggering once someone across the tripwire.

## Abandoned/Missing Detection

Ultra-Smart IP cameras can automatically detect the missing or abandoned objects in the complex environment.



Normal status

Alarm status



Scene 1

Scene 2

## Scene Change Detection

An alarm can be triggered once someone moves the camera causing scene change occurring.



# DH-IPC-HF8301E

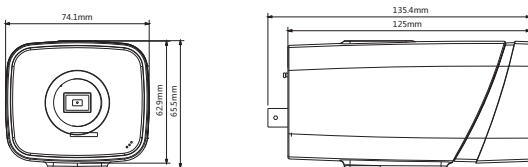
## 3MP WDR Ultra-Smart Network Camera



### Features

- 1/3" 3 Megapixel progressive scan CMOS
- Support H.264/MJPEG dual codec
- Smart triple streams supported
- Max 25/30fps@3MP(2048x1536)
- Ultra WDR (Wide Dynamic Range) up to 120dB
- Ultra 3D DNR
- Ultra Defog, ROI, EIS
- Smart detection:
  - Face detection
  - Tripwire detection
  - Intrusion detection
  - Scene change detection
- Auto back focus
- Built-in Mic
- 100/1000M Base-T Ethernet

### Dimensions (mm)



### Accessory (optional)



PFB120W

PFB121W

PFA121

### Technical Specifications

<b>Model</b>	<b>DH-IPC-HF8301E</b>	
<b>Camera</b>		
Image Sensor	1/3" 3Megapixel CMOS	
Effective Pixels	2048(H)x1536(V)	
Scanning System	Progressive	
Electronic Shutter Speed	Auto/Manual, 1/3(4)~1/10000s	
Min. Illumination	Color: 0.1Lux/F1.2, B/W: 0.01Lux/F1.2	
S/N Ratio	More than 52dB	
Video Output	1 channel BNC (1.0Vp-p,75Ω)	
<b>Camera Features</b>		
Max. IR Length	N/A	
Day/Night	Auto(ICR)/Color/B/W	
Backlight Compensation	BLC / HLC / WDR 120dB	
White Balance	Auto/Manual	
Gain Control	Auto/Manual	
Noise Reduction	Ultra 3D	
Privacy Masking	Up to 4 areas	
EIS	Support	
Ultra Defog	Support	
Smart focus	ABF	
<b>Lens</b>		
Mount Type	C/CS	
<b>Video</b>		
Compression	H.264/MJPEG	
Resolution	3M(2048×1536)/1080P(1920×1080)/720P(1280×720)/D1(704×576) /CIF(352×288)	
Frame Rate	Main Stream	3M/1080P (1 ~ 25/30fps)
	Sub Stream	D1/CIF(1 ~ 25/30fps)
	Third Stream	1080P/720P/D1(1 ~ 25/30fps)
Bit Rate	H.264: 48K ~ 8192Kbps	
ROI	Up to 4 areas	
<b>Audio</b>		
Compression	G.711a / G.711u	
Interface	2/1 channel In/Out	
<b>Smart Function</b>		
Smart detection	Tripwire	
	Intrusion	
	Scene change	
	Missing/Abandoned	
	Audio detection	
	Face detection	
<b>Network</b>		
Ethernet	RJ-45 (10/100/1000Base-T)	
Wi-Fi	N/A	
Protocol	IPv4/IPv6, HTTP, HTTPS, SSL, TCP/IP, UDP, UPnP, ICMP, IGMP, SNMP, RTSP, RTP, SMTP, NTP, DHCP, DNS, PPPOE, DDNS, FTP, IP Filter, QoS, Bonjour	
Compatibility	ONVIF, PSIA, CGI	
Max. User Access	20 users	
Smart Phone	iPhone, iPad, Android, Windows Phone	
<b>Auxiliary Interface</b>		
Memory Slot	Micro SD, Max 64GB	
Alarm	2/1 channel In/Out	
<b>General</b>		
Power Supply	DC12V/AC24V, PoE (802.3af)	
Power Consumption	Max 10W	
Working Environment	-20°C~+60°C, Less than 95% RH	
Ingress Protection	N/A	
Dimensions	71.4mm×65.5mm×135.4mm	
Weight	0.3Kg	



# DH-IPC-HFW8301E

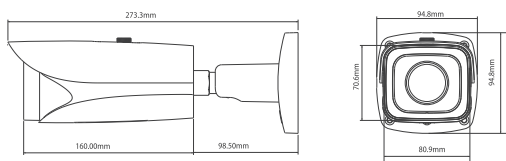
## 3MP WDR Ultra-Smart Network IR-Bullet Camera



### Features

- 1/3" 3 Megapixel progressive scan CMOS
- Support H.264/MJPEG dual codec
- Smart triple streams supported
- Max 25/30fps@3MP(2048x1536)
- Ultra WDR (Wide Dynamic Range) up to 120dB
- Ultra 3D DNR
- Ultra Defog, ROI, EIS
- Smart IR technology
- Smart detection:
  - Face detection
  - Tripwire detection
  - Intrusion detection
  - Scene change detection
- 100/1000M Base-T Ethernet
- Micro SD memory, IP66, PoE,

### Dimensions (mm)



### Accessory (optional)



PFA121

### Technical Specifications

Model	DH-IPC-HFW8301E	DH-IPC-HFW8301E-Z
<b>Camera</b>		
Image Sensor	1/3"3Megapixel AptinaCMOS	
Effective Pixels	2048(H)x1536(V)	
Scanning System	Progressive	
Electronic Shutter Speed	Auto/Manual, 1/3(4)~1/10000s	
Min. Illumination	Color: 0.1Lux/F1.2, B/W: 0.01Lux/F1.2; 0Lux/F1.2(IR on)	
S/N Ratio	More than 50dB	
Video Output	1 port (1.0Vp-p, 75Ω)	
<b>Camera Features</b>		
Max. IR LEDs Length	30m, Smart IR technology	
Day/Night	Auto(ICR)/Color/B/W	
Backlight Compensation	BLC / HLC / WDR(120dB)	
White Balance	Auto/Manual	
Gain Control	Auto/Manual	
Noise Reduction	3D	
Privacy Masking	Up to 4 areas	
EIS	Support	
Ultra Defog	Support	
<b>Lens</b>		
Focal Length	2.7~12mm	3-9mm
Max Aperture	F1.4	F1.4
Focus Control	Manual	Auto
Angle of View	H: 82°~25°	H: 85.6°~28.6°
Lens Type	Manual/ Auto Iris(DC)	Motorized/ Auto Iris(DC)
Mount Type	Board-in Type	
Compression	H.264/MJPEG	
Resolution	3M(2048×1536)/1080P(1920×1080)/720P(1280×720)/D1(704×576)/CIF(352×288)	
Frame Rate	Main Stream	3M/1080P (1~25/30fps)
	Sub Stream	D1/CIF(1 ~ 25/30fps)
	Third Stream	1080P/720P/D1(1 ~ 25/30fps)
Bit Rate	H.264: 48K ~ 8192Kbps	
ROI	Up to 4 areas	
<b>Audio</b>		
Compression	G.711a / G.711u	
Interface	1/1 channel In/Out	
<b>Smart Function</b>		
Smart detection	Tripwire	
	Intrusion	
	Scene change	
	Missing/Abandoned	
	Audio detection	
	Face detection	
<b>Network</b>		
Ethernet	RJ-45 (10/100/1000Base-T)	
Wi-Fi	N/A	
Protocol	IPv4/IPv6, HTTP, HTTPS, SSL, TCP/IP, UDP, UPnP, ICMP, IGMP, SNMP, RTSP, RTP, SMTP, NTP, DHCP, DNS, PPPOE, DDNS, FTP, IP Filter, QoS, Bonjour	
Compatibility	ONVIF, PSIA, CGI	
Max. User Access	20 users	
Smart Phone	iPhone, iPad, Android, Windows Phone	
<b>Auxiliary Interface</b>		
Memory Slot	Micro SD, Max 64GB	
Alarm	1/1 channel In/Out	
<b>General</b>		
Power Supply	DC12V(AC24V optional), PoE (802.3af)	
Power Consumption	Max 12W	
Working Environment	-20°C~+60°C, Less than 90% RH	
Ingress Protection	IP66	
Dimensions	273.3mm × 94.8mm×94.8mm	
Weight	1.3kg	

# DH-IPC-HDB(W)8301

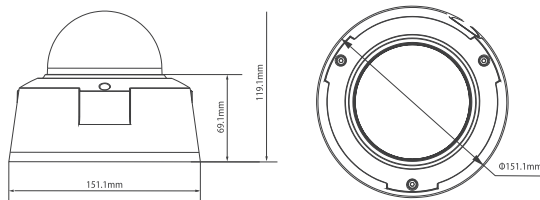
## 3MP WDR Ultra-Smart Network Motorized Dome Camera



### Features

- 1/3" 3 Megapixel progressive scan CMOS
- Support H.264/MJPEG dual codec
- Smart triple streams supported
- Max 25/30fps@3MP(2048x1536)
- Ultra WDR (Wide Dynamic Range) up to 120dB
- Ultra 3D DNR
- Ultra Defog, ROI, EIS
- Smart IR technology
- Smart detection:
  - Face detection
  - Tripwire detection
  - Intrusion detection
  - Scene change detection
- 100/1000M Base-T Ethernet,
- Micro SD memory, IP66, IK10, PoE,

### Dimensions (mm)



### Accessory (optional)



DH-PFA100 DH-PFB300S DH-PFA120 DH-PFA150 DH-PFA151

### Technical Specifications

Model	DH-IPC-HDB(W)8301	DH-IPC-HDB(W)8301-Z
<b>Camera</b>		
Image Sensor	1/3"3MegapixelAptina CMOS	
Effective Pixels	2048(H)x1536(V)	
Scanning System	Progressive	
Electronic Shutter Speed	Auto/Manual 1/3~1/10000	
Min. Illumination	Color: 0. 1Lux/F1.2, B/W: 0.01Lux/F1.2; 0Lux/F1.2(IR on)	
S/N Ratio	More than 50dB	
Video Output	1 port	
<b>Camera Features</b>		
Max. IR Length	(HDBW)20m, Smart IR technology	
Day/Night	Auto(ICR)/Color/B/W	
Backlight Compensation	BLC / HLC / WDR (120dB)	
White Balance	Auto	
Gain Control	Auto/Manual	
Noise Reduction	3D	
Privacy Masking	Up to 4 areas	
EIS	Support	
Ultra Defog	Support	
<b>Lens</b>		
Focal Length	2.7-12mm	3-9mm
Max Aperture	F1.4	F1.4
Focus Control	Manual	Auto
Angle of View	H: 82°~25°	H: 85.6°~28.6°
Lens Type	Manual/ Auto Iris(DC)	Motorized/ Auto Iris(DC)
Mount Type	Board-in Type	
<b>Video</b>		
Compression	H.264 / MJPEG	
Resolution	3M(2048x1536)/1080P(1920x1080)/720P(1280x720)/D1(704x576) /CIF(352x288)	
Frame Rate	Main Stream	3M(1~20fps)/1080P/720P(1~25/30fps)
	Sub Stream	D1/CIF(1 ~ 25/30fps)
	Third Stream	1080P/720P/D1(1 ~ 25/30fps)
Bit Rate	H.264: 32K ~ 8192Kbps	
ROI	Up to 4 areas	
<b>Audio</b>		
Compression	G.711a / G.711u	
Interface	1/1 channel In/Out	
<b>Intelligent Function</b>		
Smart detection	Tripwire	
	Intrusion	
	Scene change	
	Missing/Abandoned	
	Audio detection	
	Face detection	
<b>Network</b>		
Ethernet	RJ-45 (10/100Base-T)	
Wi-Fi	N/A	
Protocol	IPv4/IPv6, HTTP, HTTPS, SSL, TCP/IP, UDP, UPnP, ICMP, IGMP, SNMP, RTSP, RTP, SMTP, NTP, DHCP, DNS, PPPoE, DDNS, FTP, IP Filter, QoS, Bonjour	
Compatibility	ONVIF, PSIA, CGI	
Max. User Access	20 users	
Smart Phone	iPhone, iPad, Android, Windows Phone	
<b>Auxiliary Interface</b>		
Memory Slot	Micro SD, Max 64GB	
RS485	N/A	
Alarm	1/1channel In/Out	
PIR Sensor Range	N/A	
<b>General</b>		
Power Supply	DC12V/AC24V, PoE(802.3af)	
Power Consumption	Max 8W(IR ON:+2W)	Max 11W (IR on: +2W)
Working Environment	-20°C~+60°C, Less than 90%RH	
Ingress Protection	IP66	
Vandal Resistance	IK10	
Dimensions	Φ151mm×119mm	
Weight	1.25kg	



# DH-SD65220/230-HNI

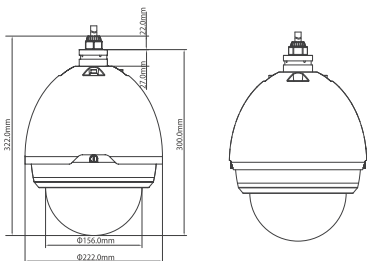
## 2MP Full HD Ultra-Smart Network PTZ Dome Camera



### Features

- Powerful 20x/30x optical zoom
- H.264 & MJPEG Three-stream encoding
- Max 60fps@720P and 30fps@1080P resolution
- Defog, DWDR, Day/Night(ICR), Ultra DNR,EIS, Auto iris, Auto focus
- Multiple network monitoring: Web viewer, CMS(DSS/PSS) & DMSS
- Max 400 °/s pan speed, 360° endless pan rotation
- Up to 255 presets, 5 auto scan, 8 tour, 5 pattern
- Built-in 7/2 alarm in/out
- Support Auto tracking and IVS
- Support intelligent 3D positioning with DH-SD protocol
- Micro SD memory, IP67, easy installation
- Optional Model:
- DH-SD65S220-HNI: FCB-EH6300, 20x, WDR

### Dimensions (mm)



### Accessory



DH-69FB



DH-PFA111



Power Supply

### Technical Specifications

Model	DH-SD65220-HNI	DH-SD65230-HNI
<b>Camera</b>		
Image Sensor	1/2.8" Exmor CMOS	
Effective Pixels	1944(H) x 1092(V), 2 Megapixels	
Scanning System	Progressive	
Electronic Shutter Speed	1/1 ~ 1/30,000s	
Min. Illumination	Color: 0.05Lux@F1.6, B/W: 0.005Lux@F1.6	
S/N Ratio	More than 50dB	
Video Output	BNC(1.0Vp-p/75Ω), PAL/NTSC	
<b>Camera Features</b>		
Day/Night	Auto(ICR) / Color / B/W	
Backlight Compensation	BLC / HLC / DWDR (DigitalWDR)	
White Balance	Auto, ATW, Indoor, Outdoor, Manual	
Gain Control	Auto / Manual	
Noise Reduction	Ultra DNR (2D/3D)	
Privacy Masking	Up to 24 areas	
Digital Zoom	16x	
Defog	On / Off	
<b>Lens</b>		
Focal Length	4.7mm~94.0mm (20x Optical zoom)	4.3mm~129mm (30x Optical zoom)
Max Aperture	F1.6 ~ F3.5	F1.6 ~ F4.7
Focus Control	Auto / Manual	
Angle of View	H: 55.4° ~ 2.80°	H:65.1° ~ 2.34°
Close Focus Distance	100mm~ 1000mm	100mm~ 1200mm
<b>PTZ</b>		
Pan/Tilt Range	Pan: 0° ~ 360°endless;Tilt: -2° ~ 90°, auto flip 180°	
Manual Control Speed	Pan: 0.1° ~300°/s;Tilt: 0.1° ~250°/s	
Preset Speed	Pan:400°/s;Tilt: 300°/s	
Preset	80(DH-SD), 255(Pelco-P/D)	
PTZ Mode	5 Pattern, 8 Tour, Auto Pan,Auto Scan	
Speed Setup	Human-oriented focal length/ speed adaptation	
Power up Action	Auto restore to previous PTZ and lens status after power failure	
Idle Motion	Activate Preset/Pan/Scan/Tour/Pattern if there is no command in the specified period	
Time Task	Auto activation of Preset/Pan/Scan/Tour/Pattern bypreset-time	
Protocol	DH-SD (Auto recognition)	
<b>Video</b>		
Compression	H.264 / MJPEG	
Resolution	1080P(1920×1080) / 720P(1280×720) / D1(704×576/704×480) / CIF(352×288/352×240)	
Frame Rate	Main Stream	1080P (1 ~ 25/30fps) / 720P(1~50/60fps)
	Sub Stream	D1/CIF(1 ~ 25/30fps)
Bit Rate	H.264: 56K ~ 8192Kbps, MJPEG: 56K ~ 20480Kbps	
<b>Audio</b>		
Compression	G.711a / G.711u (32kbps) / PCM (128kbps)	
Interface	1/1 channel In/Out	
<b>Intelligent Function</b>		
Auto Tracking	Single-scene, multiple-scene, panorama-scene	
IVS	Tripwire, Cross Warning Zone, Perimeter Protection, Loitering Detection, Abandoned Object Detection, Missing Object Detection, Illegal Parking, Fast Moving and etc.	
Tracking Trigger Mode	Manual / Auto (alarm triggered)	
Tracking Trigger Event	Targeting, Zoom, Tracking, Recording, Snapshot, Alarm and etc.	
<b>Network</b>		
Ethernet	RJ-45 (10/100Base-T)	
Protocol	IPv4/IPv6, HTTP, HTTPS, SSL, TCP/IP, UDP, UPnP, ICMP, IGMP, SNMP, RTSP, RTP, SMTP, NTP, DHCP, DNS, PPPoE, DDNS, FTP, IP Filter, QoS, Bonjour	
ONVIF	ONVIF Profile S	
Max. User Access	20 users	
Smart Phone	iPhone, iPad, Android, Windows Phone	
<b>Auxiliary Interface</b>		
Memory Slot	Micro SD, Max 64GB	
Alarm	7/2channel In/Out	
<b>General</b>		
Power Supply	AC 24V/3A(±10%)	
Power Consumption	20W, 45W(Heater on)	
Working Environment	-40°C ~ 60°C / Less than 90% RH	
Ingress Protection	IP67	
Vandal Resistance	IK10 (optional)	
Dimensions	Φ222(mm) x 322(mm)	
Weight	5.0kg	

# DH-SD6A220/230-HNI

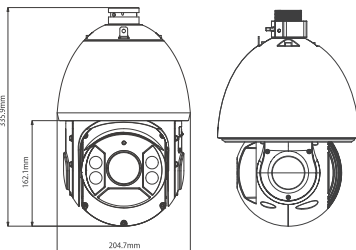
## 2MP Full HD Ultra-Smart Network IR PTZ Dome Camera



### Features

- Powerful 20x/30x optical zoom
- H.264 & MJPEG Three-stream encoding
- Max 60fps@720P and 30fps@1080P resolution
- DWDR, Day/Night(ICR), Ultra DNR, Auto iris, Auto focus
- Defog, Face detection, Audio detection, EIS, ROI
- Multiple network monitoring: Web viewer, CMS(DSS/PSS) & DMSS
- Max 240°/s pan speed, 360° endless pan rotation
- Up to 255 presets, 5 auto scan, 8 tour, 5 pattern
- Built-in 7/2 alarm in/out
- Support Auto tracking and IVS
- Support intelligent 3D positioning with DH-SD protocol
- Micro SD memory, IP66
- IR Distance up to 150m

### Dimensions (mm)



### Accessory



DH-69FB



DH-PFA111






Power Supply

### Technical Specifications

<b>Model</b>	<b>DH-IPC-HDB8306</b>	
<b>Camera</b>		
Image Sensor	1/2.8" ExmorCMOS	
Effective Pixels	1944(H) x 1092(V), 2 Megapixels	
Scanning System	Progressive	
Electronic Shutter Speed	1/1 ~ 1/30,000s	
Min. Illumination	Color: 0.05Lux@F1.6; B/W: 0.005Lux@F1.6	
S/N Ratio	More than 50dB	
Video Output	BNC(1.0Vp-p/75Ω), PAL/NTSC	
<b>Camera Features</b>		
Day/Night	Auto(ICR) / Color / B/W	
Backlight Compensation	BLC / HLC / DWDR (Digital WDR)	
White Balance	Auto, ATW, Indoor, Outdoor, Manual	
Gain Control	Auto / Manual	
Noise Reduction	Ultra DNR (2D/3D)	
Privacy Masking	Up to 24 areas	
Digital Zoom	16x	
Defog	On / Off	
<b>Lens</b>		
Focal Length	4.7mm~94.0mm (20x Optical zoom)	4.3mm~129mm (30x Optical zoom)
Max Aperture	F1.6 ~ F3.5	F1.6 ~ F4.7
Focus Control	Auto / Manual	
Angle of View	H: 55.4° ~ 2.80°	H:65.1° ~ 2.34°
Close Focus Distance	100mm~ 1000mm	100mm~1200mm
<b>PTZ</b>		
Pan/Tilt Range	Pan: 0° ~ 360°endless;Tilt: -10° ~ 90°, auto flip 180°	
Manual Control Speed	Pan: 0.1° ~200° /s;Tilt: 0.1° ~120° /s	
Preset Speed	Pan: 240° /s;Tilt: 200° /s	
Preset	80(DH-SD),255(Pelco-P/D)	
PTZ Mode	5 Pattern, 8 Tour, Auto Pan,Auto Scan	
Speed Setup	Human-oriented focal length/ speed adaptation	
Power up Action	Auto restore to previous PTZ and lens status after power failure	
Idle Motion	Activate Preset/Pan/Scan/Tour/Pattern if there is no command in the specified period	
Time Task	Auto activation of Preset/Pan/Scan/Tour/Pattern by preset-time	
Protocol	DH-SD(Auto recognition)	
IR Distance	150m(2near IR LED+ 8far IR LED)	
<b>Video</b>		
Compression	H.264 / MJPEG	
Resolution	1080P(1920×1080)/720P(1280×720)/D1(704×576/704×480)/CIF(352×288/352×240)	
Frame Rate	Main Stream	1080P (1 ~ 25/30fps) / 720P(1~50/60fps)
	Sub Stream	D1/CIF(1 ~ 25/30fps)
Bit Rate	H.264: 56K ~ 8192Kbps, MJPEG: 56K ~ 20480Kbps	
<b>Audio</b>		
Compression	G.711a / G.711u(32kbps)/PCM(128kbps)	
Interface	1/1 channel In/Out	
<b>Intelligent Function</b>		
Auto Tracking	Single-scene, multiple-scene, panorama-scene	
IVS	Tripwire, Cross Warning Zone, Perimeter Protection, Loitering Detection, Abandoned Object Detection, Missing Object Detection, Illegal Parking, Fast Moving and etc.	
Face Detection	Support	
Audio Detection	Support	
Tracking Trigger Mode	Manual / Auto (alarm triggered)	
Tracking Trigger Event	Targeting, Zoom, Tracking, Recording, Snapshot, Alarm and etc.	
<b>Network</b>		
Ethernet	RJ-45 (10/100Base-T)	
Protocol	IPv4/IPv6, HTTP, HTTPS, SSL, TCP/IP, UDP, UPnP, ICMP, IGMP, SNMP, RTSP, RTP, SMTP, NTP, DHCP, DNS, PPPoE, DDNS, FTP, IP Filter, QoS, Bonjour, 802.1x	
ONVIF	ONVIFProfile S	
Max. User Access	20 users	
Smart Phone	iPhone, iPad, Android, Windows Phone	
<b>Auxiliary Interface</b>		
Memory Slot	Micro SD, Max 64GB	
Alarm	7/2channel In/Out	
<b>General</b>		
Power Supply	AC 24V/3A(±16%)	
Power Consumption	20W, 43W(IR on, Heater on)	
Working Environment	-40°C ~ 70°C / Less than 90% RH	
Ingress Protection	IP66	
Dimensions	Φ252(mm) x 384.3 (mm)	
Weight	6.75kg	



# Comparison Table

	IPC-HF8301E	IPC-HFW8301E	IPC-HFW8301E-Z	IPC-HDB(W)8301	IPC-HDB(W)8301-Z
<b>Image</b>					
<b>Camera</b>					
Image Sensor	1/3" CMOS	1/3" CMOS		1/3" CMOS	
Effective Pixels	2048(H)x1536(V)	2048(H)x1536(V)		2048(H)x1536(V)	
Min. Illumination	Color: 0. 1Lux/F1.2, B/W: 0.01Lux/F1.2	Color: 0. 1Lux/F1.2, B/W: 0.01Lux/F1.2; 0Lux/F1.2(IR on)		Color: 0. 1Lux/F1.2, B/W: 0.01Lux/F1.2; 0Lux/F1.2(IR on)	
Video Output	1 channel BNC	1 port		1 port	
<b>Camera Features</b>					
Max.(IR) LEDs Length	NA	30m		20m (IR on)	
Day/Night	ICR	ICR		ICR	
Backlight Compensation	BLC / HLC / WDR 120dB	BLC / HLC / WDR 120dB		BLC / HLC / WDR 120dB	
Noise Reduction	Ultra 3D	Ultra 3D		Ultra 3D	
Privacy Masking	4	4		4	
EIS	Support	Support		Support	
Ultra Defog	Support	Support		Support	
Smart focus	ABF	NA		NA	
<b>Lens</b>					
Focal Length	NA	2.7~12mm	3 -9mm motorized	2.7 ~12mm	3 -9mm motorized
Max Aperture	NA	F1.4	F1.4	F1.4	F1.4
Focus Control	Manual	Manual	Auto	Manual	Auto
Angle of View	NA	H: 82°~25°	H: 85.6°~28.6°	H: 82°~25°	H: 85.6°~28.6°
Lens Type	NA	Manual	Motorized	Manual	Motorized
Mount Type	C/CS	Board-in Type			
<b>Video</b>					
Max Resolution	3M(2048x1536)	3M(2048x1536)		3M(2048x1536)	
Bit Rate	H.264: 48K ~ 8192Kbps	H.264: 48K ~ 8192Kbps		H.264: 48K ~ 8192Kbps	
<b>Smart Function</b>					
Smart Detection	Tripwire, Intrusion, Scene change, Missing/Abandoned, Audio detection, Face detection	Tripwire, Intrusion, Scene change, Missing/Abandoned, Audio detection, Face detection		Tripwire, Intrusion, Scene change, Missing/Abandoned, Audio detection, Face detection	
<b>Audio</b>					
Compression	G.711a/G.711u	G.711a / G.711u		G.711a / G.711u	
Interface(In/Out)	2/1	1/1		1/1	
<b>Auxiliary Interface</b>					
Memory slot	Micro SD	Micro SD		Micro SD	
RS485		NA		NA	
Alarm(In/Out)	1/1	1/1		1/1	
<b>General</b>					
Power Supply	DC12V/AC24V,PoE	DC12V,PoE ( AC24 optional)		DC12V/AC24V,PoE	
Power Consumption	Max 8W	Max 12W (Motorized lens: +2W)		Max 8W (IR on:+2W, Motorized lens: +2W)	
Working Environment	-20°C~+60°C, Less than 95% RH	-20°C~+60°C, Less than 90% RH		-20°C~+60°C, Less than 90% RH	
Ingress Protection		IP66		IP66 & IK10	

## NVR

### NVR4832-16P

32CH 2U 16-PoE NVR



- 32ch IP camera inputs
- Max 200Mbps Bit Rate input
- Compatible with 5Mp,3Mp,1080p, 720p, D1 and etc.
- 1 HDMI, 1 VGA output up to 1080p,1TV
- 1/1ch Mic in/out
- 16ch alarm in &4ch relay out, RS485, RS232
- 8 SATA, 1 eSATA, 3 USB(1 USB3.0), 1 RJ45(1000M)
- 16 PoE ports

### NVR4416-16P

16CH 1.5U 16-PoE NVR



- 16ch IP camera inputs
- Max 200Mbps Bit Rate input
- Compatible with 5Mp,3Mp,1080p, 720p, D1 and etc.
- 1 HDMI, 1 VGA output up to 1080p,1 TV
- 1/1ch Mic in/out
- 16ch alarm in & 4ch relay out, RS485, RS232
- 4 SATA, 1 eSATA, 2 USB(1 USB3.0), 1 RJ45(1000M)
- 16 PoE ports

### NVR4208-8P

8CH 1U 8-PoE NVR



- 8ch IP camera inputs
- Max 200Mbps Bit Rate input
- Compatible with 5Mp,3Mp,1080p, 720p, D1 and etc.
- 1 HDMI, 1 VGA output up to 1080p
- 1/1ch Mic in/out
- 4ch alarm in &2ch relay out, RS485, RS232
- 2 SATA, 2 USB(1 USB3.0), 1 RJ45(1000M)
- 8 PoE ports

### NVR4104-P

4CH Smart 1U 4-PoE NVR



- 4ch IP camera inputs
- Max 80Mbps Bit Rate input
- Compatible with 5Mp,3Mp,1080p, 720p, D1 and etc.
- 1 HDMI, 1 VGA output up to 1080p
- 1/1ch Mic in/out
- 1 SATA, 2 USB, 1 RJ45(100M)
- 4 PoE ports

## Accessory



### PFB300C PFA112/113

- Ceiling mount for dome camera by mount adapter
- PFA112/113 used to add length



### PFB301S PFA150/151

- Parapet mount for PTZ dome/pole mount/corner mount



### PFA140/141

- For installation of power supply, lightning protection module, optical transceiver etc.
- IP66







## Smart PSS

### Pro Surveillance System

- Max 256 devices or 2000 channels connection
- Support multi-screen and 64\*4 windows
- Max 36-channel synchronization playback
- Remote PTZ and alarm control
- Use PC as NVR and saving cost
- Support snapshot, record, talk, E-map, video wall, etc.
- Used for central monitoring system
- Support windows and MAC
- Friendly GUI and ease of use

## DMSS

### Mobile Phone Surveillance Software

- Max 16-channels preview at the same time
- Support 1080p, main or sub stream optional
- Alarm notification push to get instant alert
- Remote PTZ and alarm control
- Support snapshot, record, talk, E-map, HDD report, etc.
- Provide convenient remote surveillance solution
- Support iOS, Android, Windows Phone, Blackberry
- Friendly GUI and ease of use



### PFA100, PFB302S



- Wall mount for dome camera
- PFB302S has junction box function

### PFB300C, PFA112/113

- Ceiling mount for dome camera by mount adapter
- PFA112/113 used to add length



### PFA121, PFA150/151

- Junction box for box camera
- IP66
- pole mount/corner mount with PFA121





## DAHUA TECHNOLOGY MAKE YOUR LIFE SAFER

\* Design and specifications are subject to change without notice.

Ultra-Smart-01, Jun. 2014



**Securitem Ltd**

ITA - GB - FRA  
www.setik.biz  
Email: info@setik.biz



© Dahua Technology, All rights reserved