

# SMART IP SOLUTION

IP Camera • Speed Dome • NVR • CMS

# Tiandy

**Tiandy Digital Technology Co.,Ltd.**

Email: sales@tiandy.it

Distributor Information



# Company Profile

# StarLight+H.265



Sede

Centro Ricerca&Sviluppo

Sede Produzione

TIANJIN TIANDY DIGITAL TECHNOLOGY CO., LTD è una azienda leader della Cina del nord, sita ad un centinaio di km da Pechino ed è una realtà che da più di vent'anni si occupa di videosorveglianza. Con oltre 100.000 mq di stabilimento produttivo e ad oltre 800 ingegneri del proprio team di R&D, Tiandy è tra i migliori dieci produttori di video sorveglianza in Cina e tra i migliori 50 a livello mondiale. Offre una gamma completa di prodotti IP e continua a proporre tecnologie all'avanguardia, nelle diverse applicazioni, per supportare tutte le esigenze dei propri partner; La qualità dei prodotti e l'efficienza dei processi produttivi sono garantiti dalla certificazione ISO9001 e da un sistema di controllo qualità interno. Inoltre Tiandy è tra i membri principali dell'organizzazione ONVIF, ciò garantisce ai prodotti sviluppati la massima compatibilità con i protocolli principali presenti ad oggi sul mercato. Con il 30% di incremento annuale, Tiandy conta di diventare un punto di riferimento per le soluzioni IP e di poter dare il proprio contributo alla sicurezza nel mondo, questo anche grazie a Partnership con i più importanti distributori Mondiali.



Showroom



Area Produzione

Laboratorio Test Temperatura



Laboratorio Test Video

Laboratorio Test EMC&Vibrazioni

Centro Ricerca&Sviluppo

## S+265 Super Starlight



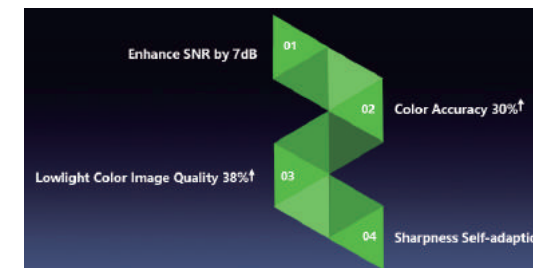
Super Starlight



Normale

La linea di prodotti Super Starlight di Tiandy adotta la tecnologia TVP, che offre immagini a colori di qualità anche in condizioni di bassa luce.

## Tecnologia TVP



1. Migliorato rapporto S/N (Segnale/Rumore) a 7db, Tecnologia a riduzione del disturbo.
2. Colori più accurati del 30%, tecnologia bilanciamento del bianco migliorata.
3. Qualità visiva migliorata del 38%, grazie ad un brevetto TIANDY che ottimizza le gradazioni d'immagine.
4. Maggior nitidezza dell'immagine, grazie a template dinamici adattivi

## Tecnologia S+265



S+265 è una tecnologia ideata da TIANDY con la quale si può risparmiare fino al 30% di banda rispetto allo standard H.265 e fino al 70% rispetto al vecchio standard H.264.

## Il mondo splende con le Super Starlight Tiandy - Seul



## Il mondo splende con le Super Starlight Tiandy - Londra





Esclusiva



Attiva Pre-allarme / Tracciamento accurato / Deterrente Visivo  
Video: <http://bit.ly/2ipvv70>

Caratteristiche



- Super Starlight 0.0008Lux@Color
- Auto-tracciamento
- IR + White LED + Raggio Laser
- Microfono e Speaker integrati

Funzione AEW



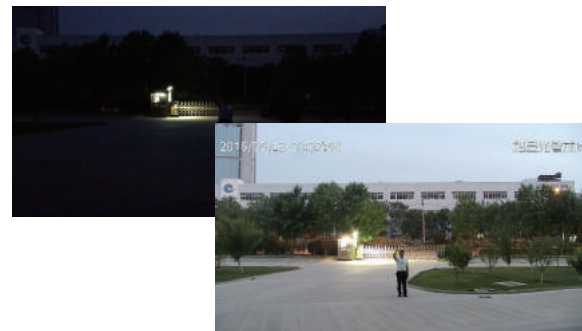
Se all'interno dell'area delimitata in precedenza la PTZ rileverà un intruso, essa genererà luce bianca e lo speaker integrato diffonderà un messaggio audio come allarme

Auto-tracciamento



Se l'intruso rimarrà nella zona per più di 30secondi, la PTZ attiverà il laser e auto-traccerà l'intruso, attivando gli eventi pianificati in precedenza

Tecnologia TVP Starlight



Tecnologia TVP in grado di offrire immagini di qualità pur in presenza di poca luce

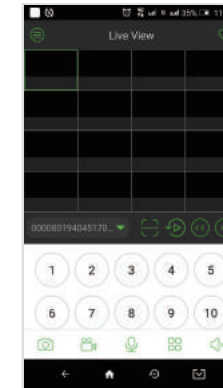
Sicurezza a Distanze Elevate



La PTZ IR utilizza un LED infrarosso Varifocale che si aggusterà automaticamente in base allo zoom, coprendo aree estese.

Anteprima

L'interfaccia "All-in-one" per l'anteprima, offre estrema convenienza e alta usabilità.



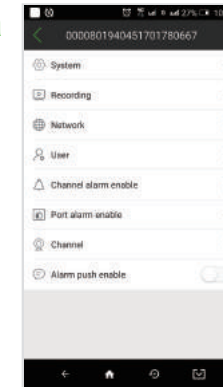
Riproduzione Fimato

Riproduzione a video di uno o più filmati (fino a 4 sullo stesso schermo). Possibilità di visionare eventi specifici. Gestione semplificata delle registrazioni



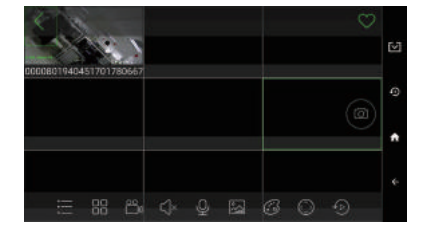
Configurazione Remota

Design ideato per gli installatori che devono impostare da remoto l'NVR. Soluzione semplice per la soddisfazione del cliente



Operazioni Veloci

Gruppi di monitoraggio preferiti. Possibilità di selezionare in maniera semplice canali da differenti NVR

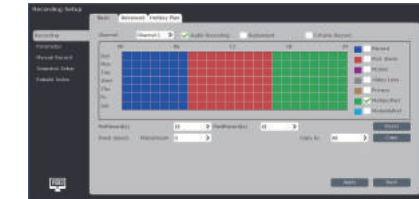


Ricerca Intelligente (Smart Search)



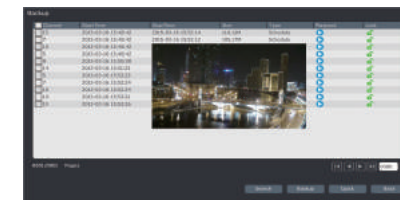
La ricerca intelligente permette agli utenti di trovare i fotogrammi che contengono i soggetti ripresi in maniera più rapida, analizzando i fotogrammi del video.

Registrazione Intelligente (Smart Record)



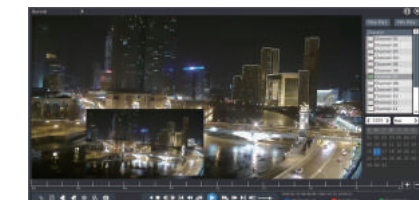
Gli NVR Smart Tiandy offrono la possibilità di impostare diverse modalità di registrazione in base alle richieste dell'utente, come il tipo di allarme, tempo, risoluzione etc...

Backup Veloce



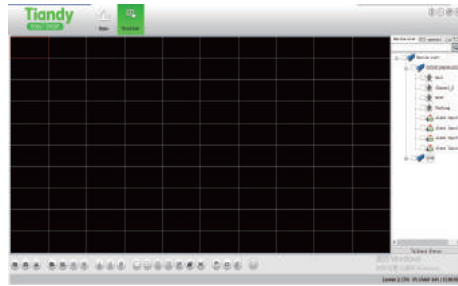
Possibilità di salvare momenti specifici in maniera veloce e rivederli senza cambiare interfaccia

Screenshot Veloce dalla Timeline

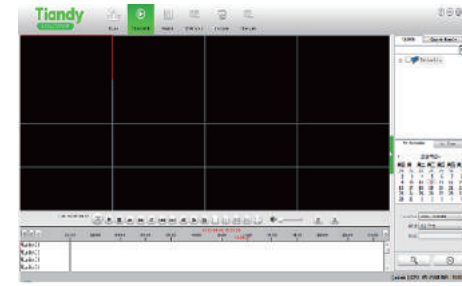


Gli NVR Smart Tiandy supportano lo screenshot veloce durante la visione di registrazioni posizionando il cursore del mouse in qualsiasi punto della timeline

Anteprima Video



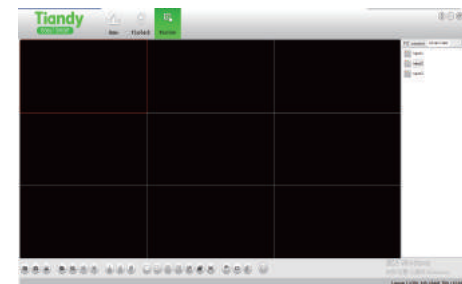
Riproduzione



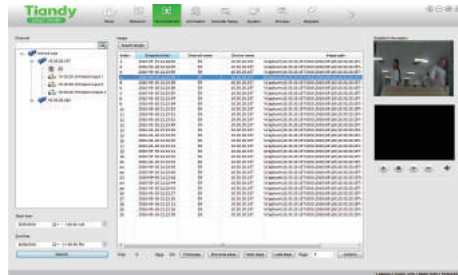
E-map



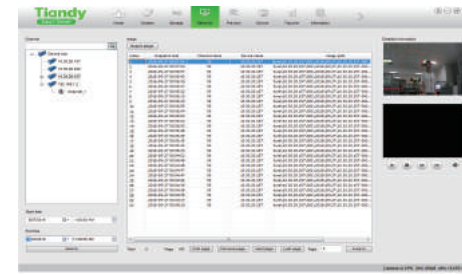
Favourite Outlet



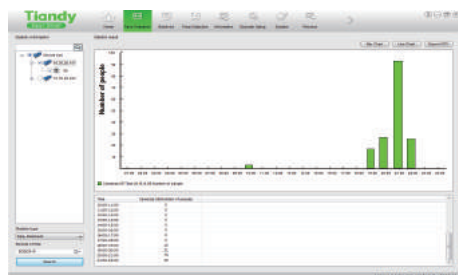
Ricerca Volti



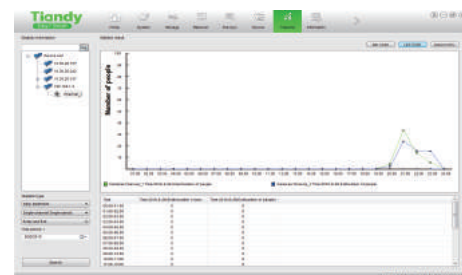
Analisi comportamento



Statistiche volti



Statistiche Intelligenti



4K Panoramic Camera

I prodotti Panoramic di Tiandy risultano essere la soluzione ideale per installazioni in negozi.



Store

"L'ultima telecamera fisheye di TIANDY, equipaggiata di sensore 12-Megapixel garantisce una qualità d'immagine superiore. Tiandy fornisce visione panoramica 180° (installazione a parete) o visione a 360° (soffitto/pavimento/montaggio su tavolo) con funzione dewarp. Supporta l'auto-tracciamento e funzione di allarme anticipato offrendo sicurezza in aree estese come aeroporti, aree parcheggio, uffici e altro..."

Mini Dome Camera



- Structure upgrade:
1. IR Enhancement: Matrix IR Array
  2. Cable free design
  3. IP67
  4. Built-in Mic, TF Card Slot

Mini Bullet Camera



- Structure upgrade:
1. IR Enhancement: Matrix IR Array
  2. Cable free design
  3. IP67
  4. TF Card Slot



## Smart IP Camera

<p><b>TC-NC43M(2.8-12mm)</b> 4.0MP H.265 Motorized IR Bullet Camera</p>  <ul style="list-style-type: none"> <li>• 1/3" 4MP CMOS Sensor</li> <li>• H.265/H.264 M-JPEG Encoding, Triple Stream, Up to 2560X1440@25fps</li> <li>• Motorized Lens: 2.8-12mm, Auto Focus, IR LEDs: 30m-50m</li> <li>• VCA: Tripwire/Perimeter/Missing&amp;Foreign Object/Loitering/Running etc</li> <li>• Dual-ICR, WDR, ROI, BLC, 1/1ch Audio I/O,2/1ch Alarm I/O</li> <li>• PoE, DC12V/AV24V, TVS 6000V Protection, MicroSD Slot up to 128GB,USB</li> <li>• Material: Metal, IP67</li> </ul>	<p><b>TC-NC44M (2.8-12mm)</b> 4.0MP H.265 Vandalproof Motorized IR Dome Camera</p>  <ul style="list-style-type: none"> <li>• 1/3" 4MP CMOS Sensor</li> <li>• H.265/H.264 M-JPEG Encoding, Triple Stream, Up to 2560X1440@25fps</li> <li>• Motorized Lens: 2.8-12mm, Auto Focus, IR LEDs: 30m~50m</li> <li>• VCA: Tripwire/Perimeter/Missing&amp;Foreign Object/Loitering/Running etc</li> <li>• Built-in Mic, Dual-ICR, WDR, ROI, BLC,1/1ch Audio I/O,2/1ch Alarm I/O</li> <li>• PoE, DC12V/AC24V, TVS 6000V Protection, MicroSD Slot up to 128GB,USB</li> <li>• Material: Metal, IP66, IK10</li> </ul>
<p><b>TC-NC414 (3.6mm)</b> 4.0MP H.265 Mini IR Bullet Camera</p>  <ul style="list-style-type: none"> <li>• 1/3" 4MP CMOS Sensor</li> <li>• H.265/H.264 M-JPEG Encoding</li> <li>• Triple Stream, Up to 2560X1440@25fps</li> <li>• Lens: 3.6mm, IR LEDs: 25m</li> <li>• VCA: Tripwire/Perimeter/Missing&amp;Foreign Object/Loitering/Running etc.</li> <li>• Dual-ICR, WDR, ROI, BLC, Audio Input</li> <li>• PoE, TVS 6000V Protection, MicroSD Slot up to 128GB</li> <li>• Material: Metal, IP67 ,Cable free design</li> </ul>	<p><b>TC-NC452 (2.8mm)</b> 4.0MP H.265 Mini IR Eyeball Camera</p>  <ul style="list-style-type: none"> <li>• 1/3" 4MP CMOS Sensor</li> <li>• H.265/H.264 M-JPEG Encoding</li> <li>• Triple Stream, Up to 2560X1440@25fps</li> <li>• Lens: 2.8mm, IR LEDs: 20m</li> <li>• VCA: Tripwire/Perimeter/Missing&amp;Foreign Object/Loitering/Running etc.</li> <li>• Dual-ICR, WDR, ROI, BLC, Audio Input</li> <li>• PoE, TVS 6000V Protection</li> <li>• Material: Metal core, IP67, IK10, Built-in Mic, TF card slot, Cable free design</li> </ul>
<p><b>TC-NC23V (2.8-12mm)</b> 2.0MP Varifocal IR Bullet Camera</p>  <ul style="list-style-type: none"> <li>• 1/2.8" 2MP CMOS Sensor</li> <li>• H.264 /M-JPEG &amp; Triple Stream Encoding</li> <li>• Max 1080P@25/30fps, Lens: 2.8-12mm, IR LEDs: 30m-50m</li> <li>• VCA: Tripwire/Perimeter</li> <li>• Dual-ICR, WDR, ROI, BLC, 1/1ch Audio I/O,1/0ch Alarm I/O</li> <li>• PoE, TVS 6000V Protection, MicroSD Slot up to 128GB, USB</li> <li>• Material: Metal, IP67</li> </ul>	<p><b>TC-NC24V (2.8-12mm)</b> 2.0MP Vandalproof Varifocal IR Dome Camera</p>  <ul style="list-style-type: none"> <li>• 1/2.8" 2MP CMOS Sensor</li> <li>• H.264 /M-JPEG &amp; Triple Stream Encoding</li> <li>• Max 1080P@25/30fps, Lens: 2.8-12mm, IR LEDs: 30m-50m</li> <li>• VCA: Tripwire/Perimeter</li> <li>• Dual-ICR, WDR, ROI, BLC,1/1ch Audio I/O,1/0ch Alarm I/O</li> <li>• PoE, TVS 6000V Protection, MicroSD Slot up to 128GB,USB</li> <li>• Material: Metal, IP66, IK10</li> </ul>
<p><b>TC-NC214 (4mm)</b> 2.0MP Mini IR Bullet Camera</p>  <ul style="list-style-type: none"> <li>• 1/2.8" 2MP CMOS Sensor</li> <li>• H.264 &amp; Triple Stream Encoding</li> <li>• Max 1080P@25/30fps, Lens: 4mm, IR LEDs: 20m</li> <li>• VCA: Tripwire/Perimeter</li> <li>• Dual-ICR, WDR, ROI, BLC</li> <li>• PoE, TVS 6000V Protection</li> <li>• Material: Metal, IP67 ,Cable free design</li> </ul>	<p><b>TC-NC252 (2.8mm)</b> 2.0MP Mini IR Eyeball Camera</p>  <ul style="list-style-type: none"> <li>• 1/2.8" 2MP CMOS Sensor</li> <li>• H.264 &amp; Triple Stream Encoding</li> <li>• Max 1080P@25/30fps, Lens: 2.8mm, IR LEDs: 20m</li> <li>• VCA: Tripwire/Perimeter</li> <li>• Dual-ICR, WDR, ROI, BLC</li> <li>• PoE, TVS 6000V Protection</li> <li>• Material: Metal core, IP67, IK10, Built-in Mic, TF card slot, Cable free design</li> </ul>

## Starlight IP Camera

<p><b>TC-NC9001S3E-2MP-ESA</b> H.265 2.0MP Super Starlight ABF Box Camera</p>  <ul style="list-style-type: none"> <li>• 1/1.8" 2MP CMOS Sensor</li> <li>• H.265/H.264 /M-JPEG Encoding, Up to 1920X1080 High Resolution</li> <li>• Support ABF,Ultra Low Light 0.0008lux@Color, Triple Stream,</li> <li>• VCA: Tripwire/Perimeter</li> <li>• NIR, WDR, 3D DNR, HLC, Dual-ICR, AWB, AGC, BLC, 1/1ch Audio I/O,1/1ch Alarm I/O</li> <li>• TVS 6000V, Lightning/Surge 2000V Protection, Smart Defog</li> <li>• MicroSD Slot up to 128GB, Dual Network Interface, USB</li> <li>• Material: Metal</li> </ul>	<p><b>TC-NC9101S3E-2MP-ES (6mm)</b> 2.0MP Super Starlight EXIR Bullet Camera</p>  <ul style="list-style-type: none"> <li>• 1/2.8" 2MP CMOS Sensor</li> <li>• H.265/H.264 HP/MP/BP/M-JPEG Encoding</li> <li>• Triple Stream, Up to 1920X1080@25fps,Ultra Low Light 0.0008lux@Color</li> <li>• Lens: 4mm/6mm, IR LEDs: 30m-50m</li> <li>• VCA: Tripwire/Perimeter/Crowd/Foreign &amp; Missing Object/Fast Moving etc</li> <li>• Dual-ICR, WDR, HLC, BLC, 1/1ch Audio I/O,1/0ch Alarm I/O</li> <li>• PoE, DC12V, TVS 6000V Protection, MicroSD Slot up to 128GB,USB</li> <li>• IP67</li> </ul>
<p><b>TC-NC23MS (2.8-12mm)</b> 2MP Starlight Motorized IR Bullet Camera</p>  <ul style="list-style-type: none"> <li>• 1/2.8" 2MP CMOS Sensor</li> <li>• H.265/H.264 HP/MP/BP/M-JPEG Encoding, Triple Stream, Up to 1920X1080 High Resolution</li> <li>• Motorized Lens: 2.8-12mm, IR LEDs: 30m-50m</li> <li>• VCA: Tripwire/Perimeter/Crowd/Foreign Object/Missing Object/Fast Moving etc</li> <li>• NIR, WDR, 3D DNR, HLC, Dual-ICR, AWB, AGC, BLC, 1/1ch Audio I/O,2/1ch Alarm I/O</li> <li>• PoE, DC12V, TVS 6000V Protection, MicroSD Slot up to 128GB,USB</li> <li>• Material: Metal, IP67</li> </ul>	<p><b>TC-NC24MS (2.8-12mm)</b> 2.0MP Starlight Motorized Vandalproof IR Dome Camera</p>  <ul style="list-style-type: none"> <li>• 1/2.8" 2MP CMOS Sensor</li> <li>• H.265/H.264 HP/MP/BP/M-JPEG Encoding, Triple Stream, Up to 1920X1080 High Resolution</li> <li>• Motorized Lens: 2.8-12mm, Auto Focus, IR LEDs: 20m-30m</li> <li>• VCA: Tripwire/Perimeter/Crowd/Foreign Object/Missing Object/Fast Moving etc</li> <li>• NIR, WDR, 3D DNR, HLC, Dual-ICR, AWB, AGC, BLC, 1/1ch Audio I/O,2/1ch Alarm I/O,USB</li> <li>• Built-in Mic, PoE, DC12V/AC24V, TVS 6000V Protection, MicroSD Slot up to 128GB</li> <li>• Material: Metal, IP66, IK10</li> </ul>
<p><b>TC-NC214S (4mm)</b> 2.0MP Starlight Mini IR Bullet Camera</p>  <ul style="list-style-type: none"> <li>• 1/2.8" 2MP CMOS Sensor</li> <li>• H.264 High Profile &amp; Triple Stream Encoding</li> <li>• Max 1080P@25/30 fps, Ultra Low Light 0.002lux@Color</li> <li>• Lens: 4mm, IR LEDs: 20m</li> <li>• VCA: Tripwire/Perimeter</li> <li>• NIR, Dual-ICR, WDR, ROI, BLC</li> <li>• PoE, TVS 6000V Protection</li> <li>• Material: Metal, IP67 ,Cable free design</li> </ul>	<p><b>TC-NC252S (2.8mm)</b> 2.0MP Starlight Mini IR Eyeball Camera</p>  <ul style="list-style-type: none"> <li>• 1/2.8" 2MP CMOS Sensor</li> <li>• H.264 High Profile &amp; Triple Stream Encoding</li> <li>• Max 1080P@25/30 fps, Ultra Low Light 0.002lux@Color</li> <li>• Lens: 2.8mm, IR LEDs: 20m</li> <li>• VCA: Tripwire/Perimeter</li> <li>• NIR, Dual-ICR, WDR, ROI, BLC</li> <li>• PoE, TVS 6000V Protection</li> <li>• Material: Metal core, IP67, IK10, Built-in Mic, TF card slot, Cable free design</li> </ul>
<p><b>TC-NC9201S3E-2MP-E-I2S (2.8mm)</b> 2MP Starlight Super Mini IR Dome Camera</p>  <ul style="list-style-type: none"> <li>• 1/2.8" 2MP CMOS Sensor</li> <li>• H.265/H.264 HP/MP/BP/M-JPEG Encoding, Triple Stream, Up to 1920X1080 High Resolution</li> <li>• Lens: 2.8mm, IR LEDs: 10m~15m</li> <li>• Ultra Low Light 0.002lux@Color</li> <li>• VCA: Tripwire/Perimeter/Crowd/Foreign Object/Missing Object etc.</li> <li>• Dual-ICR, WDR, ROI, BLC, 1/1ch Audio I/O, 1/1ch Alarm I/O</li> <li>• PoE, Wifi, TVS 6000V Protection, MicroSD Slot up to 128GB</li> <li>• Material: Plastic, IP66</li> </ul>	<p><b>TC-NC2AS</b> 2.0MP Starlight 20X Zoom IR Bullet Camera</p>  <ul style="list-style-type: none"> <li>• 1/2.8" 2MP CMOS Sensor</li> <li>• H.265/H.264 HP/MP/M-JPEG Encoding</li> <li>• 1080P@25/30fps, Triple Stream</li> <li>• Auto Focus, 20X Optical Zoom, 16X Digital Zoom</li> <li>• 100m IR Range, IR+White LED</li> <li>• Smart Analytics Function, Including Tripwire and Perimeter</li> <li>• Tough Condition Adaptability -40℃ ~70℃</li> <li>• IP66, Vandalproof, Wiper</li> </ul>

# Smart Speed Dome

# Smart NVR

**TC-NH6333IA-G**  
H.265 3.0MP 33X AEW IR PTZ



- 1/2.8" 3MP CMOS Sensor
- 3MP@25/30fps, H.265/H.264 /M-JPEG & Triple Stream Encoding
- TIANDY Camera Module, 33X Optical Zoom, 16X Digital
- Color: 0.05Lux @(F1.6, 50 IRE, ICR off), B/W: 0.02Lux @(F1.6, 50 IRE, ICR on)
- IR LED+White Light+Green Laser, Up to 180~200m IR Distance, -16~90° Tilt Angle
- VCA: Auto-tracking/Facial/Tripwire/Perimeter Detection
- 1/1ch Audio I/O, 8/2ch Alarm I/O, 128GB MicroSD Card, Built-in Speaker
- IP66, TVS 6000V, Lightning/Surge 4000V Protection, -40°C-70°C

**TC-NH6230ISA-G**  
H.265 2.0MP 30X Super Starlight AEW IR PTZ



- 1/1.8" 2MP CMOS Sensor
- 1080P@25/30fps, H.265/H.264 /M-JPEG & Triple Stream Encoding
- TIANDY Camera Module, 30X Optical Zoom, 16X Digital
- Color: 0.0008 Lux @(F1.5,AGC ON), B/W: 0.0002Lux @(F1.5,AGC ON)
- IR LED+White Light+Green Laser, Up to 180~200m IR Distance, -16~90° Tilt Angle
- VCA: Auto-tracking/Facial/Tripwire/Perimeter Detection
- 1/1ch Audio I/O, 8/2ch Alarm I/O, 128GB MicroSD Card, Built-in Speaker
- IP66, TVS 6000V, Lightning/Surge 4000V Protection, -40°C-70°C

**TC-NH6233IA-G**  
H.265 2.0MP 33X Starlight AEW IR PTZ



- 1/2.8" 2MP CMOS Sensor
- 1080P@25/30fps, H.265/H.264 /M-JPEG & Triple Stream Encoding
- TIANDY Camera Module, 33X Optical Zoom, 16X Digital
- Color: 0.002 Lux @(F1.5,AGC ON), B/W: 0.001Lux @(F1.5,AGC ON)
- IR LED+White Light+Green Laser, Up to 180~200m IR Distance, -16~90° Tilt Angle
- VCA: Auto-tracking/Facial/Tripwire/Perimeter Detection
- 1/1ch Audio I/O, 8/2ch Alarm I/O, 128GB MicroSD Card, Built-in Speaker
- IP66, TVS 6000V, Lightning/Surge 4000V Protection, -40°C-70°C

**TC-NH6333IE-CP**  
H.265 3.0MP 33X POE+ IR PTZ



- 1/2.8" 3.0MP CMOS Sensor
- 1536p@25/30fps, H.265/H.264 /M-JPEG & Triple Stream Encoding
- TIANDY Camera Module, 33X Optical Zoom, 16X Digital
- Color: 0.05Lux @(F1.6, 50 IRE, ICR off), B/W: 0.02Lux @(F1.6, 50 IRE, ICR on)
- IR LED, Up to 80~100m IR Distance, -16~90° Tilt Angle
- VCA: Tripwire/Perimeter /Counting/Loitering/Crowd/Parking Detection etc..
- PoE+, DC12V, 1/1ch Audio I/O, 1/1ch Alarm I/O, 128GB MicroSD Card
- IP66, TVS 6000V, Lightning/Surge 4000V Protection, -40°C-70°C

**TC-NH6233I**  
H.265 2.0MP 33X Starlight IR PTZ



- 1/2.8" 2.0MP CMOS Sensor
- 1080p@25/30fps, H.265/H.264 /M-JPEG & Triple Stream Encoding
- TIANDY Camera Module, 33X Optical Zoom, 16X Digital
- Color: 0.002Lux @(F1.6,50 IRE,ICR OFF), B/W: 0.001Lux@ (F1.6,50 IRE, ICR ON)
- 10 Array IR LED, Up to 180~200m IR Distance, -16~90° Tilt Angle
- VCA: Tripwire/Perimeter Detection/ Smart Defog
- 1/1ch Audio I/O, 1/1ch Alarm I/O, 128GB MicroSD Card
- IP66, TVS 6000V, Lightning/Surge 4000V Protection, -40°C-70°C

**TC-NH6220IE-CP**  
H.265 2.0MP 20x Starlight POE+ IR PTZ



- 1/2.8" 2.0MP CMOS Sensor
- 1080p@25/30fps, H.265/H.264 /M-JPEG & Triple Stream Encoding
- TIANDY Camera Module, 20X Optical Zoom, 16X Digital
- Color: 0.002 Lux @(F1.5,AGC ON), B/W: 0.001Lux @(F1.5,AGC ON)
- IR LED, Up to 80~100m IR Distance, -16~90° Tilt Angle
- VCA: Tripwire/Perimeter / Counting/Loitering/Crowd/Parking Detection etc.
- PoE+, DC12V, 1/1ch Audio I/O, 1/1ch Alarm I/O, 128GB MicroSD Card
- IP66, TVS 6000V, Lightning/Surge 4000V Protection, -40°C-70°C

**TC-NH6233**  
H.265 2.0MP 33X Starlight PTZ



- 1/2.8" 2.0MP CMOS Sensor
- 1080p@25/30fps, H.265/H.264 /M-JPEG & Triple Stream Encoding
- TIANDY Camera Module, 33X Optical Zoom, 16X Digital
- Color: 0.002 Lux @(F1.6,AGC ON), B/W: 0.001Lux @(F1.6,AGC ON)
- -15~90° Tilt Angle
- VCA: Tripwire/Perimeter Detection/Crowd/Parking Detection, Missing etc.
- 1/1ch Audio I/O, 1/1ch Alarm I/O, 128GB MicroSD Card
- IP67, TVS 6000V, Lightning/Surge 4000V Protection, -40°C-70°C
- Optional: TC-NH6220 , H.265 2.0MP 20X Starlight PTZ

**TC-NH3204IE**  
H.265 2.0MP 4X Starlight Mini EW IR POE PTZ



- 1/2.8" 2MP CMOS Sensor
- 1080P@25/30fps, H.265/H.264 /M-JPEG & Triple Stream Encoding
- TIANDY Camera Module, 4X Optical Zoom, 16X Digital
- Color: 0.002 Lux @(F1.5,AGC ON), B/W: 0.001Lux @(F1.5,AGC ON)
- IR LED+White Light, Up to 30~50m IR Distance, -2~90° Tilt Angle
- VCA: Tripwire/Perimeter/Loitering/Crowd/Parking Detection/People Counting etc.
- Built Mic and Speaker, Built-in Gyro and Support Image Auto-flip
- PoE, DC12V, 1/1ch Audio I/O, 2/1ch Alarm I/O, 128GB MicroSD Card, Wi-Fi
- Indoor, TVS 6000V, Lightning/Surge 4000V Protection, -10°C-50°C

**TC-NR5005M7-S1**  
5ch, 1HDD, Mini 1U



- 5ch IP Camera Inputs; 5ch Sub-stream Realtime Display
- 1ch 8MP/1ch 5MP/2ch 3MP/4ch 1080P Realtime Display
- 4ch 1080P Sync Playback
- Bandwidth 40 Mbps Incoming and 40 Mbps Outgoing
- Up to 4K Resolution Recording
- Plug&Play, Support 5ch Intelligent Analysis Process
- HDMIx1, VGA, Audio Output
- 1 SATA(Up to 6TB), Alarm I/O 0/1, 2x USB

**TC-NR5010M7-S1**  
10ch, 1HDD, Mini 1U



- 10ch IP Camera Inputs; 10ch Sub-stream Realtime Display
- 1ch 8MP/1ch 5MP/2ch 3MP/4ch 1080P/ 8ch 720P Realtime Display
- 8ch 1080P Sync Playback
- Bandwidth 60 Mbps Incoming and 60 Mbps Outgoing
- Up to 4K Resolution Recording
- Plug&Play, Support 10ch Intelligent Analysis Process
- HDMIx1, VGA, Audio Output
- 1 SATA(Up to 6TB), Alarm I/O 0/1, 2x USB

**TC-NR5020M7-S1**  
20ch, 1HDD, Mini 1U



- 20ch IP Camera Inputs; 16ch Sub-stream Realtime Display
- 1ch 8MP/1ch 5MP/2ch 3MP/4ch 1080P/8ch 720P Realtime Display
- 16ch 1080P Sync Playback
- Bandwidth 60 Mbps Incoming and 60 Mbps Outgoing
- Up to 4K Resolution Recording
- Plug&Play, Support 20ch Intelligent Analysis Process
- HDMIx1, VGA, Audio Output
- 1 SATA(Up to 6TB), Alarm I/O 0/1, 2x USB

**TC-NR5020M7-S2**  
20ch, 2HDD, 1U



- 20ch IP Camera Inputs; 20ch Sub-stream Realtime Display
- 8ch 4MP/9ch 3MP/16ch 1080P/20ch 720P Realtime Display
- 8ch 4MP/9ch 3MP/16ch 1080P Sync Playback
- Bandwidth 140 Mbps Incoming and 140 Mbps Outgoing
- Up to 4K Resolution Recording, Support ANR, N + 1 Hot Standby
- Plug&Play, Support 20ch Intelligent Analysis Process
- HDMIx1, VGA, Audio Output
- 2 SATA(Up to 12TB), Alarm I/O 0/1, 2x USB

**TC-NR2020M7-S4**  
20ch, 4HDD, 1.5U



- 40ch IP Camera Inputs; 40ch Sub-stream Realtime Display
- 8ch 4MP/9ch 3MP/16ch 1080P/20ch 720P Realtime Display
- 8ch 4MP/9ch 3MP/16ch 1080P Sync Playback
- Bandwidth 140 Mbps Incoming and 140 Mbps Outgoing
- Up to 4K Resolution Recording, Support ANR, N + 1 Hot Standby
- Plug&Play, Support 20ch Intelligent Analysis Process
- HDMIx1, VGA, Audio Output
- 4 SATA(Up to 24TB), Alarm I/O 0/1, 2x USB

**TC-NR2040M7-S4**  
40ch, 4HDD, 1.5U



- 40ch IP Camera Inputs; 40ch Sub-stream Realtime Display
- 8ch 4MP/9ch 3MP/16ch 1080P/20ch 720P Realtime Display
- 8ch 4MP/9ch 3MP/16ch 1080P Sync Playback
- Bandwidth 280 Mbps Incoming and 280 Mbps Outgoing
- Up to 4K Resolution Recording, Support ANR, N + 1 Hot Standby
- Plug&Play, Support 40ch Intelligent Analysis Process
- HDMIx1, VGA, BNC, Audio Output
- 4 SATA(Up to 24TB), Alarm I/O 16/4, 2x USB

**TC-NR2040M7-S8**  
40ch, 8HDD, RAID, 2U



- 40ch IP Camera Inputs; 40ch Sub-stream Realtime Display
- 8ch 4MP/9ch 3MP/16ch 1080P/20ch 720P Realtime Display
- 8ch 4MP/9ch 3MP/16ch 1080P Sync Playback
- Bandwidth 280 Mbps Incoming and 280 Mbps Outgoing
- Up to 4K Resolution Recording, Support ANR, N + 1 Hot Standby
- Plug&Play, Support 40ch Intelligent Analysis Process
- HDMIx2, VGAX2, Audio Output 2ch
- 8 SATA(Up to 48TB), Alarm I/O 16/4, 3 x USB

**TC-NR2080M7-S8**  
80ch, 8HDD, RAID, 2U



- 80ch IP Camera Inputs; 64ch Sub-stream Realtime Display
- 8ch 4MP/9ch 3MP/16ch 1080P/20ch 720P Realtime Display
- 8ch 4MP/9ch 3MP/16ch 1080P Sync Playback
- Bandwidth 400 Mbps Incoming and 200 Mbps Outgoing
- Up to 4K Resolution Recording, Support ANR, N + 1 Hot Standby
- Plug&Play, Support 80ch Intelligent Analysis Process
- HDMIx2, VGAX2, Audio Output 2ch
- 8 SATA(Up to 48TB), Alarm I/O 16/4, 3x USB

## Smart NVR

**TC-NR2080M7-E16**  
80ch, 16HDD, RAID, 3U



- 80ch IP Camera Inputs; 64ch Sub-stream Realtime Display
- 8ch 4MP/9ch 3MP/16ch 1080P/20ch 720P Realtime Display
- 8ch 4MP/9ch 3MP/16ch 1080P Sync Playback
- Bandwidth 400 Mbps Incoming and 200 Mbps Outgoing
- Support JBOD, RAID0, RAID1, RAID5, RAID10
- Up to 4K Resolution Recording, Support 80ch Intelligent Analysis Process
- Plug&Play, HDMIx2, VGA x 2, Different Audio Source
- 16 SATA(Up to 96TB), Alarm I/O 16/4, 3 x USB

**TC-NR2160M7-E16**  
160ch, 16HDD, RAID, 3U



- 160ch IP Camera Inputs; 64ch Sub-stream Realtime Display
- 8ch 4MP/9ch 3MP/16ch 1080P/20ch 720P Realtime Display
- 8ch 4MP/9ch 3MP/16ch 1080P Sync Playback
- Bandwidth 400 Mbps Incoming and 200 Mbps Outgoing
- Support JBOD, RAID0, RAID1, RAID5, RAID10
- Up to 4K Resolution Recording, Support 160ch Intelligent Analysis Process
- Plug&Play, HDMIx2, VGA x 2, Different Audio Source
- 16 SATA(Up to 96TB), Alarm I/O 16/4, 3 x USB

**TC-NR4004M7-P1**  
4ch, 4 PoE Ports, 1HDD, 1U



- 4ch IP Camera Inputs; 4ch Sub-stream Realtime Display
- 4ch 1080P/720P/4CIF Sync Playback
- Bandwidth 40 Mbps Incoming and 40 Mbps Outgoing
- Up to 6MP Resolution Recording
- Plug&Play with 4 Independent PoE Network Interfaces
- Support 4ch Intelligent Analysis Process
- HDMIx1, VGA, Output Up to 1080P
- 1 SATA(Up to 6TB), Alarm Output, 2x USB
- Optional: TC-NR1004M7-S1

**TC-NR4008M7-P2**  
8ch, 8 PoE Ports, 2HDD, 1U



- 8ch IP Camera Inputs; 6ch 1080P/8ch 720P Realtime Display
- 6ch 1080P/8ch 720P Sync Playback
- Bandwidth 80 Mbps Incoming and 80 Mbps Outgoing
- Up to 6MP Resolution Recording
- Plug&Play with 8 Independent PoE Network Interfaces
- Support 8ch Intelligent Analysis Process
- HDMIx1, VGA x 1, Output Up to 1080P
- 2 SATA(Up to 12TB), Alarm Output, 2 x USB

**TC-NR4016M7-P2**  
16ch, 8 PoE Ports, 2HDD, 1U



- 16ch IP Camera Inputs; 6ch 1080P/12ch 720P Realtime Display
- 6ch 1080P/12ch 720P Sync Playback
- Bandwidth 128 Mbps Incoming and 64 Mbps Outgoing
- Up to 6MP Resolution Recording
- Plug&Play with 8 Independent PoE Network Interfaces
- Support 16ch Intelligent Analysis Process
- HDMIx1, VGA x 1, Output Up to 1080P
- 2 SATA(Up to 12TB), Alarm Output, 2 x USB

**TC-NR1016M7-P4**  
16ch, 8 PoE Ports, 4HDD, 1.5U



- 16ch IP Camera Inputs; 8ch 1080P/16ch 720P Realtime Display
- 8ch 1080P/16ch 720P Sync Playback
- Bandwidth 128 Mbps Incoming and 64 Mbps Outgoing
- Up to 6MP Resolution Recording
- Plug&Play with 8 Independent PoE Network Interfaces
- Support 16ch Intelligent Analysis Process
- HDMIx1, VGA x 1, Output Up to 1080P
- 4 SATA(Up to 24TB), Alarm I/O 16/4, 2 x USB

**TC-NR1032M7-S8**  
32ch, 8HDD, 2U



- 32ch IP Camera Inputs; 8ch 1080P/8ch 720P Realtime Display
- 8ch 1080P/8ch 720P Sync Playback
- Bandwidth 200 Mbps Incoming and 120 Mbps Outgoing
- Up to 5MP Resolution Recording
- Plug&Play, Support 32ch Intelligent Analysis Process
- 2 HDMI(Different Video Source), 1 VGA, Output Up to 1080P
- 8 SATA(Up to 48TB), 16/4ch Alarm I/O, 3 x USB

**Easy Live/ Mobile Live**



- DDNS/P2P/IP
- Support IPC, PTZ, NVR
- Multi-screen Preview
- Local Playback
- Push Alarm Message
- Remote configuration

## Software • Accessori

### Software

**EASY7**  
CMS



- Support 200ch Input / 200 Devices Input (Free)
- Max Support 400ch Input /400 Devices Input
- Support IPC, NVR, DVR, Encoder, Decoder
- Multi-level Management System

**EASY7**  
CMS



- Max 100,000 Channel Input Management
- C/S, B/S Structure Network Surveillance System
- Support IPC, NVR, DVR, NVR, Encoder, Decoder and etc
- Modularization Design, Easy Installation and Expansion
- Multi-level Management System

### Trasmissione Ottica

**TC-FE117TRS**  
10/100m Singlemode Fiber Optic Converter



- 1ch 10/100Mbps Ethernet Transmission Over Single-mode Fiber
- Transmission Distance: 20KM
- MTBF>100000Hours
- Wide Range Working Temperature: -40 C ~+75 C

### Tastiera

**TC-5820B**  
PTZ Camera Keyboard Controller



- For PTZ Camera
- Network Connections, RS232, RS485
- Joystick Control and PTZ Functions

### Staffe

**A30 / 30Y / A35 / A36**



- Wall/Ceiling/Corner/Pole Mount Bracket for PTZ Dome Cameras
- Material: Aluminum

**A23+A21**



- Material: Aluminum

### Box di Giunzione

**TC-712S3E**



- TC-712S3E: Wall Mount Bracket for Bullet/Box Camera
- Material: Aluminum

**TC-811**



- Junction Box for Bullet and Dome Cameras
- Material: Aluminum



# Accessori

## VF Bullet / Mini Bullet



Model Mount



A22 Junction box



A22+A36 Pole mount



A36 Pole mount

## Fix Dome / VF Dome



Model Mount



A22 Junction box



A23+A21 Wall mount



A23+A21+811 Wall mount

## VF Dome



Model Mount



A24+A21 Wall mount



A24+A20 Pendant mount



A24+A21+TC-DF811 Wall mount

## Super Mini Dome



Model Mount



A23+A21 Wall mount



A23+A20 Pendant mount



A23+A21+TC-DF811 Wall mount

## PTZ



Model Mount



A30 + 811 Wall Mount



A30/A30Y+A36 Pole mount



A37+A38 Pendant mount

# Certificazioni • Premi

## Certificazioni



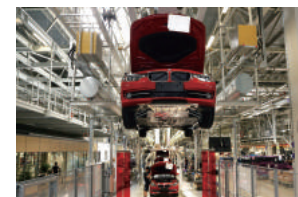
CE, FCC, ISO Certifications, ONVIF Full Member

## Premi



TOP50 of Globe, TOP10 of China, China Well-known, National Standards

## Progetti riusciti



BMW Workshop



China National Stadium



UK-London



China-Shanghai



Turkey-Istanbul



Ecuador-Quito



Tajikistan-Duschanbe



Brazil-Natal